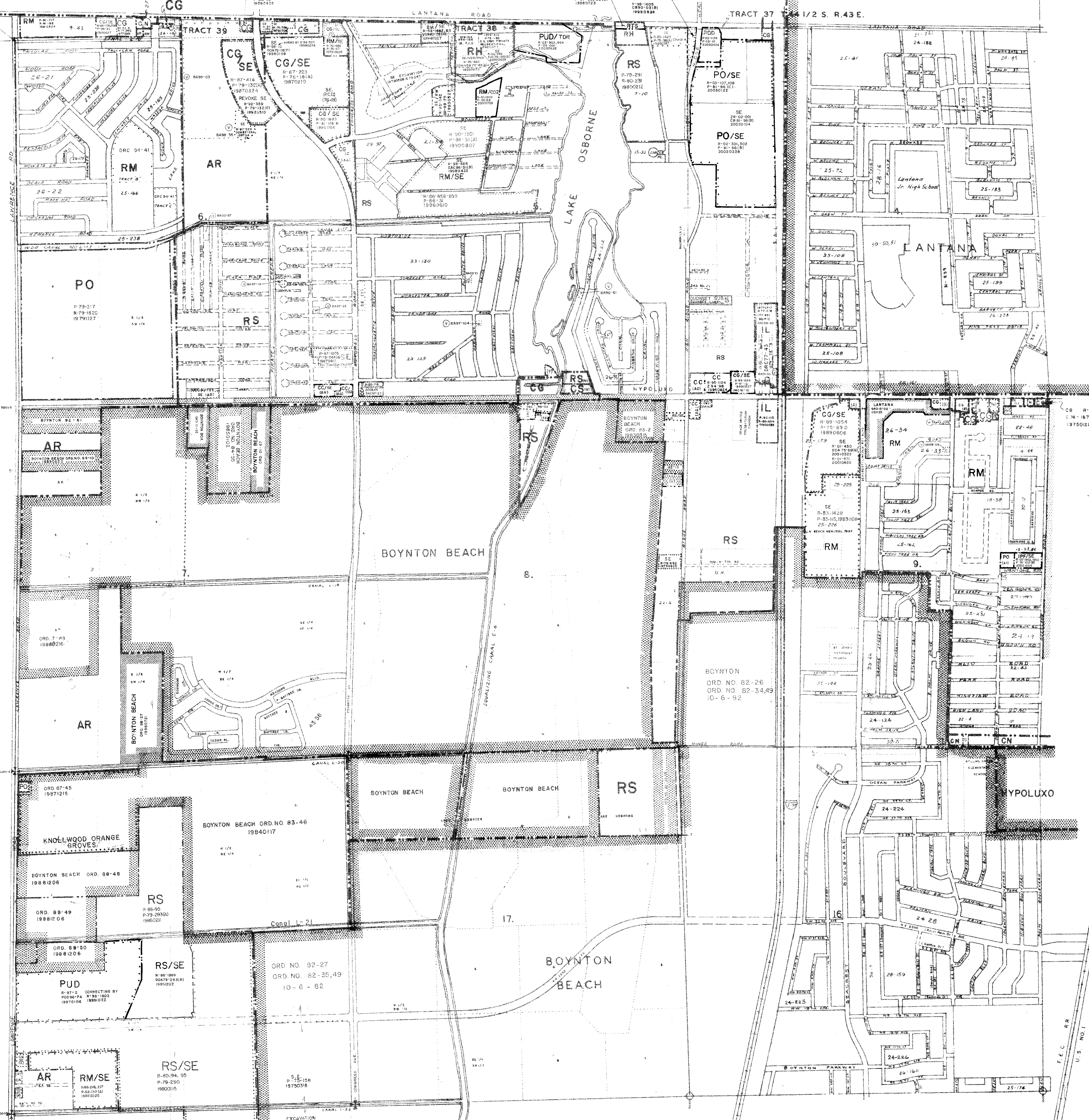


ATLANTIS



RESOLUTIONS

1987-01-13	1987-01-13	1987-01-13	1987-01-13	1987-01-13	1987-01-13	1987-01-13	1987-01-13	1987-01-13	1987-01-13
1987-01-13	1987-01-13	1987-01-13	1987-01-13	1987-01-13	1987-01-13	1987-01-13	1987-01-13	1987-01-13	1987-01-13
1987-01-13	1987-01-13	1987-01-13	1987-01-13	1987-01-13	1987-01-13	1987-01-13	1987-01-13	1987-01-13	1987-01-13

- PUD BOUNDARIES
- DISTRICT BOUNDARIES
- CORPORATE BOUNDARIES

The zoning category for the property indicated on this sheet may not be consistent with the property's Future Land Use designation under the Palm Beach County Comprehensive Plan. Please contact the Palm Beach County Planning Division at 100 Australian Avenue, West Palm Beach, FL, 33406, (561) 235-5300, to confirm the property's Future Land Use designation and other relevant Comprehensive Plan requirements.

RESOLUTIONS

1987-01-13	1987-01-13	1987-01-13	1987-01-13	1987-01-13	1987-01-13	1987-01-13	1987-01-13	1987-01-13	1987-01-13
1987-01-13	1987-01-13	1987-01-13	1987-01-13	1987-01-13	1987-01-13	1987-01-13	1987-01-13	1987-01-13	1987-01-13
1987-01-13	1987-01-13	1987-01-13	1987-01-13	1987-01-13	1987-01-13	1987-01-13	1987-01-13	1987-01-13	1987-01-13

PALM BEACH COUNTY, FLORIDA
OFFICIAL ZONING DISTRICT MAP
 Scale 1" = 600' approx. Date 1987-01-13
 Sheet No. 19